

mDIN9-F-BO-V2A

1. Description:

mDIN9-F-BO-V2A is a simple mini Din 9 Female socket breakout board. It brings all 9 pins of a mini Din 9 Female socket to screw terminal blocks or headers for easy testing, prototyping and breadboard connection. For breadboard connections, user can use the 10pin header on the bottom for a sideways connection. User can also use the two 5pin headers on both sides of the breakout board to connect to the front end of the breadboard for a steady connection.

2. Features:

- All 10 pins (including shield) of a mini Din 9 Female socket brought out to headers or screw terminal blocks
- Various connecting method chosen by users.
- 2 mounting holes with 2mm diameter hole size
- 1.0"(25.4mm)X0.8"(20.32mm) board dimensions

3. Parts:

- 1) 1pc X mDIN-F-BO-V2A PCB
- 1) 1pc X mini Din 9 Female socket
- 1) 1pc X 5pin 0.1"(2.54mm) spacing terminal block
- 1) 1pc X 5pin 0.1"(2.54mm) spacing terminal block
- 1) 1pc X 10pin 0.1"(2.54mm) header

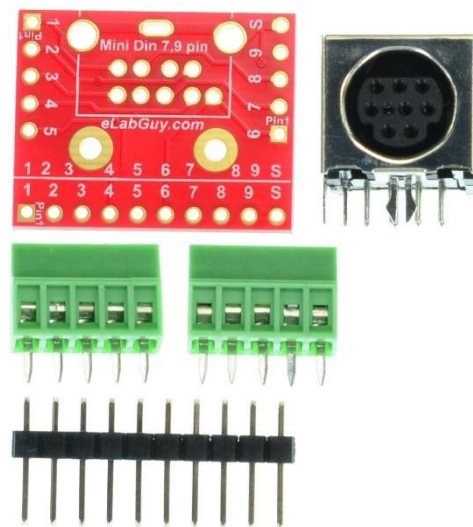
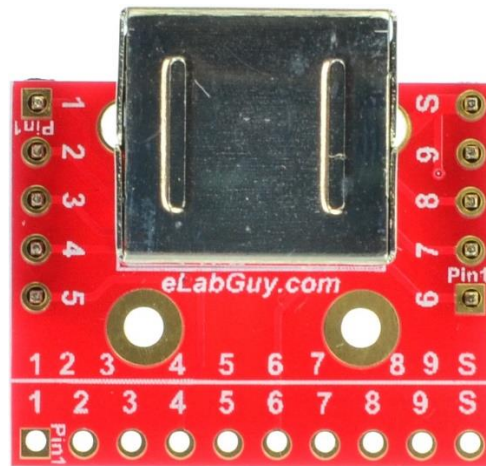


Figure 1: Parts inside the kit
(Note: the module is not assembled, user can decide which connector to use on the module.)

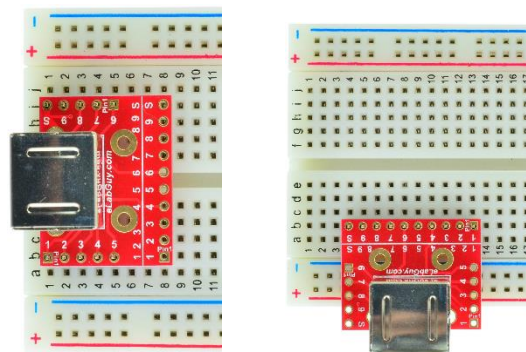


Figure 2: Example of connecting the mDIN9-F-BO-V2A on breadboard

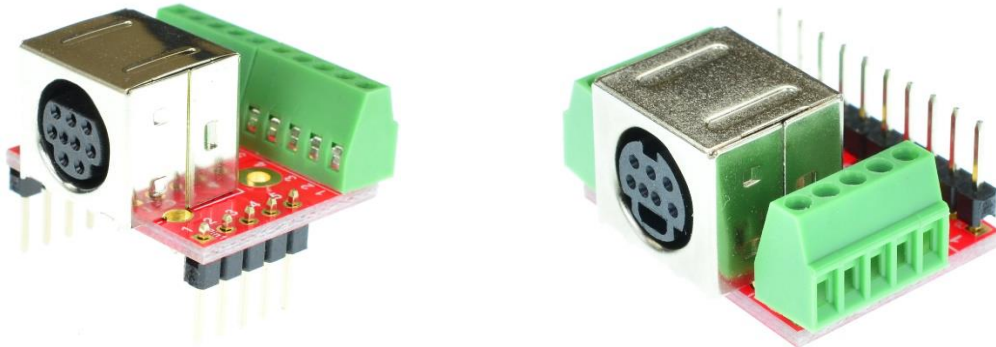
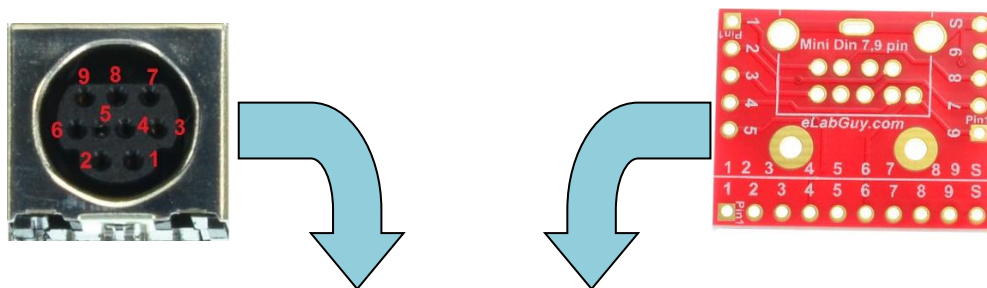


Figure 3: mDIN9-F-BO-V2A various connections



Mini Din 9 Female Connector	mDin-F-BO-V1A PCB
1	8
2	9
3	1
4	5
5	6
6	2
7	3
8	7
9	4

Figure 4: Mini Din 9 Female connector to mDin-F-BO-V2A PCB pinout matching table

Related products from eLabGuy:



mDIN4-F-BO-V1A mDIN5-F-BO-V1A mDIN6-F-BO-V2A mDIN7-F-BO-V2A mDIN8-F-BO-V1A