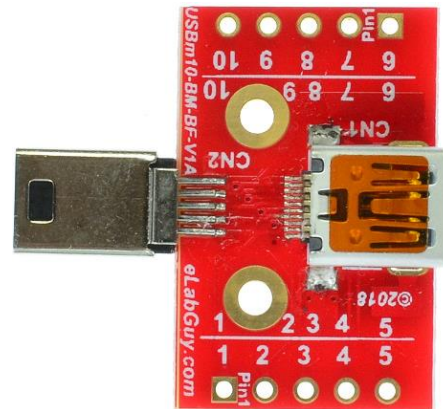


USBm10-BM-BF-V1A

1. Description:

USBm10-BM-BF-V1A is a simple mini USB2.0 Type B 10pin Male to mini USB2.0 Type B 10pin Female pass-through adapter breakout board. It brings all 10 pins of a mini USB2.0 Type B 10pin Male and a mini USB2.0 Type B 10pin Female connector to screw terminal blocks and headers for easy testing, prototyping and breadboard connection. All 10 pins of the mini Male connector directly connect to the Female connector. User can also use the two 5 pins headers on both sides of the breakout board to connect to breadboard or prototype PCB.



2. Features:

- All 10 pins of a mini USB2.0 Type B 10pin Male and a mini USB2.0 Type B 10pin Female connector brought out to headers and screw terminal blocks
- All 10 pins of the Male connector directly connect to the Female connector.
- Various connecting method chosen by users.
- 1.00"(25.4mm)X0.63"(16mm) board dimensions

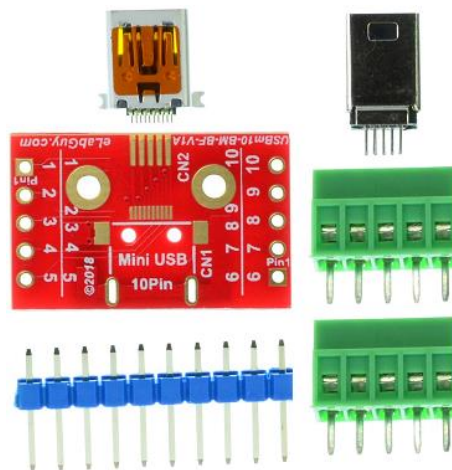


Figure 1: Parts inside the kit
(Note: the module is not assembled, user can decide which connector to use on the module.)

3. Parts:

- 1) 1pc X USBm10-BM-BF-V1A PCB
- 2) 1pc X mini USB2.0 Type B 10pin Male Connector
- 3) 1pc X mini USB2.0 Type B 10pin Female Connector
- 4) 2pc X 5pin 0.1"(2.54mm) spacing terminal block
- 5) 1pc X 10pin 0.1"(2.54mm) header

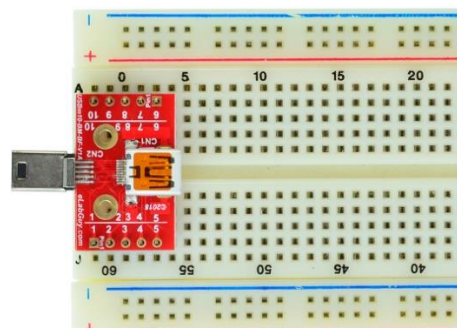


Figure 2: Example of connecting the USBm10-BM-BF-V1A on a breadboard (Note: This picture only shows the pins spacing, actual use may not be used on a breadboard)



Figure 3: USBm10-BM-BF-V1A with headers

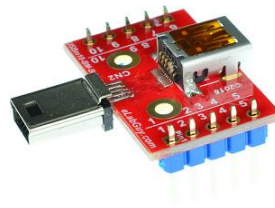


Figure 4: USBm10-BM-BF-V1A with terminal blocks

Related products from eLabGuy:



USBm10-BF-BF-V1A



USBm10-BM-BF-V1A



USBm10-BF-BO-V1A



USBm10-BM-BO-V1A