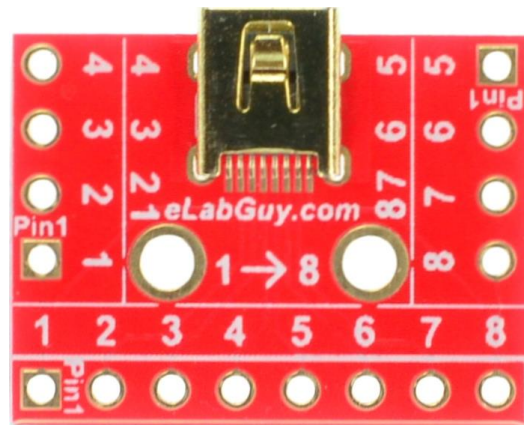


USBm-BF8-BO-V1A

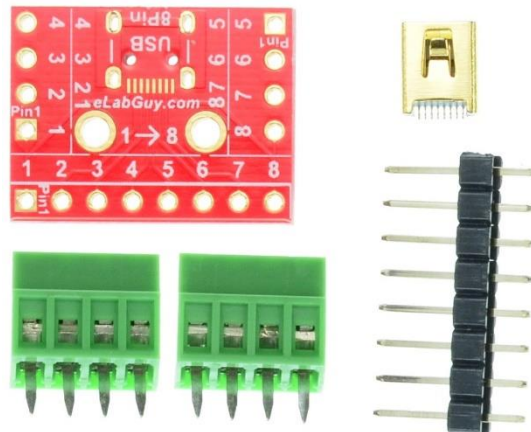
1. Description:

USBM-BF8-BO-V1A is a simple mini 8-pin USB Female socket breakout board. It brings all 24 pins of a mini 8-pin USB Female connector to screw terminal blocks and headers for easy testing, prototyping and breadboard connection. For breadboard connections, user can use the 8pin header on the bottom for a sideways connection. User can also use the two 4pin headers on both sides of the breakout board to connect to the front end of the breadboard for a steady connection.



2. Features:

- All 8 pins of a mini 8-pin USB Female connector brought out to headers and screw terminal blocks
- Various connecting method chosen by users.
- 0.80"(20.32mm)X0.60"(15.24mm) board dimensions



3. Parts:

- 1) 1pc X USBM-BF8-BO-V1A PCB
- 2) 1pc X mini 8-pin USB Female Connector
- 3) 2pc X 4pin 0.1"(2.54mm) spacing terminal block
- 4) 1pc X 8pin 0.1"(2.54mm) header

Figure 1: Parts inside the kit

(Note: the module is not assembled, user can decide which connector to use on the module.)

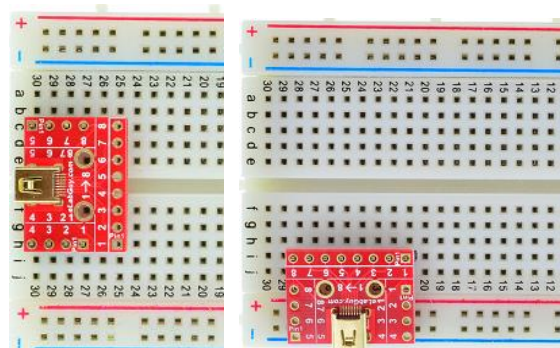


Figure 2: Example of connecting the USBM-BF8-BO-V1A on a breadboard

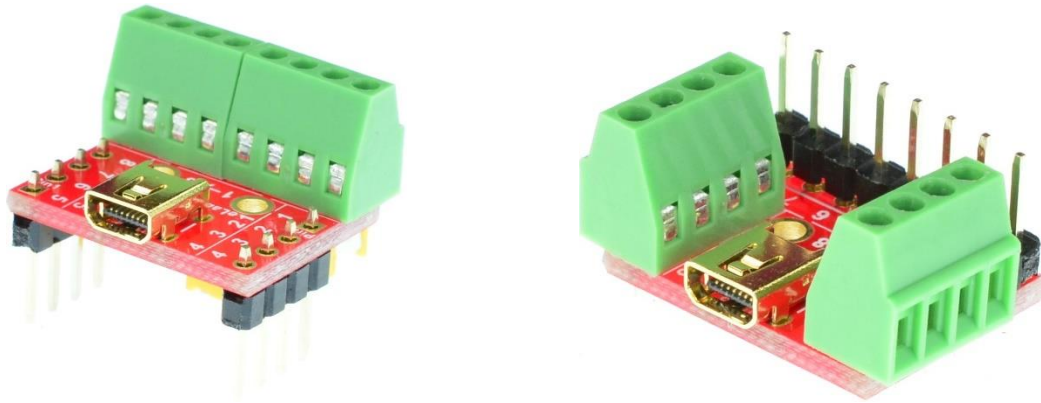


Figure 3: USBM-BF8-BO-V1A Various connections

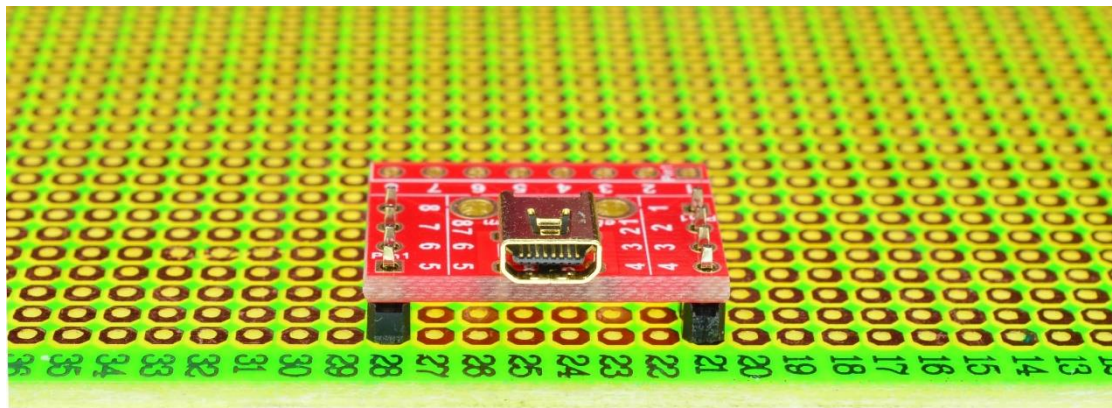


Figure 5: Solid Mounting on prototype PCB

Related products from eLabGuy:



USBm-BF0-B10-V1A



USBm-BM10-BO-V1A