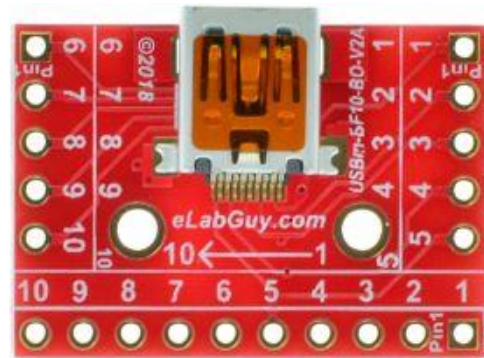


USBm-BF10-BO-V2A

1. Description:

USBm-BF10-BO-V2A is a simple Mini USB Type B 10pin Female socket breakout board. It brings all 10 pins of a Mini USB Type B 10pin connector to screw terminal blocks and headers for easy testing, prototyping and breadboard connection. For breadboard connections, user can use the 10pin header on the bottom for a sideways connection. User can also use the two 5pin headers on both sides of the breakout board to connect to the front end of the breadboard for a steady connection.



2. Features:

- All 10 pins of a Mini USB Type B 10pin Female socket brought out to headers and screw terminal blocks
- Various connecting method chosen by users.
- 1.0"(25.4mm)X0.7"(17.78mm) board dimensions

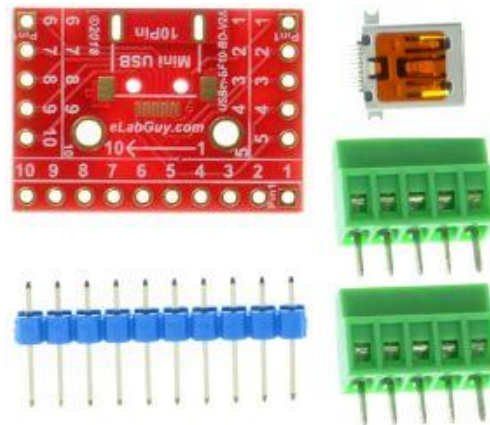


Figure 1: Parts inside the kit
(Note: the module is not assembled, user can decide which connector to use on the module.)

3. Parts:

- 1) 1pc X USBm-BF10-BO-V2A PCB
- 2) 1pc X Mini USB Type B 10pin Female socket
- 3) 2pc X 5pin 0.1"(2.54mm) spacing terminal block
- 4) 1pc X 10pin 0.1"(2.54mm) header

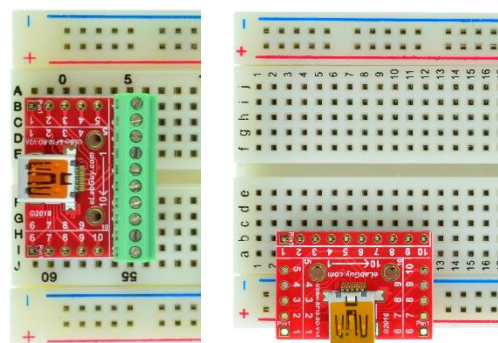


Figure 2: Example of connecting the USBm-BF10-BO-V2A on a breadboard

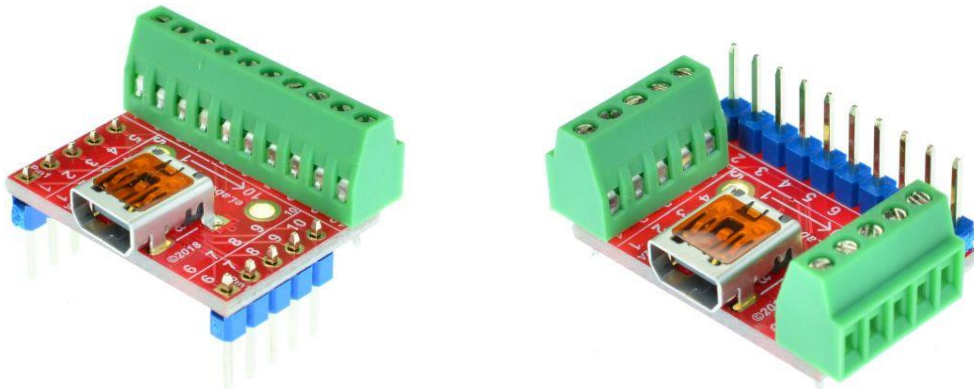


Figure 3: USBm-BF10-BO-V2A Various connections

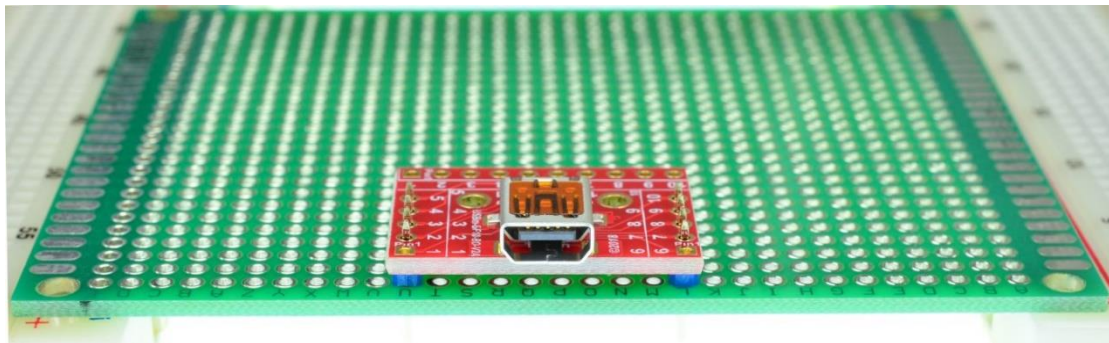
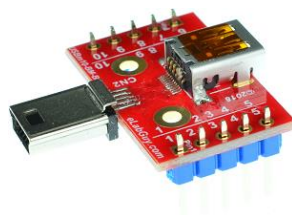


Figure 5: Solid Mounting on prototype PCB

Related products from eLabGuy:



USBm-BM10-BO-V1A



USB10-BM-BF-V1A



USB10-BF-BF-V1A