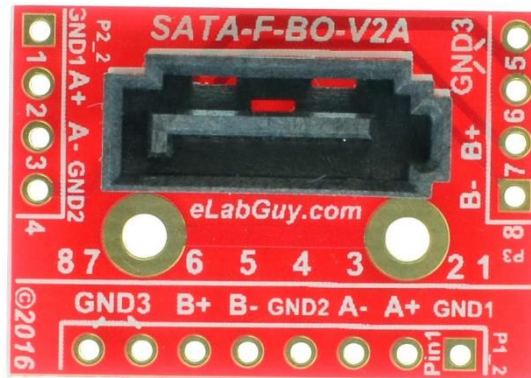


# SATA-F-BO-V2AV

## 1. Description:

SATA-F-BO-V2AV is a simple Vertical SATA Female socket breakout board. It brings all 8 pins of a SATA female socket to screw terminal blocks or headers for easy testing, prototyping and breadboard connection. For breadboard connections, user can use the two 4pin headers on both sides of the breakout board to connect to the front end of the breadboard for a steady connection.



## 2. Features:

- All 8 pins of a Vertical SATA Female Socket brought out to headers or screw terminal blocks
- Securely stay on the PCB with Through Hole type SATA connector
- Various connecting method chosen by users.
- 2 mounting holes with 2mm diameter hole size
- 1.0"(25.4mm)X0.7"(17.78mm) board dimensions

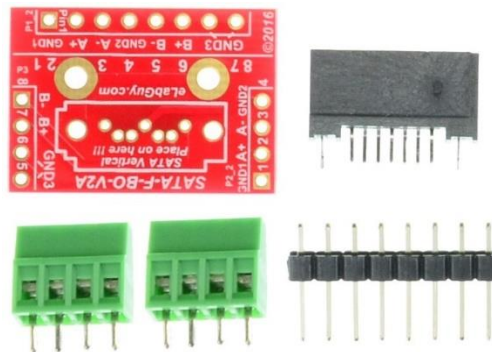


Figure 1: Parts inside the kit  
(Note: the module is not assembled, user can decide which connector to use on the module.)

## 3. Parts:

- 1) 1pc X SATA-F-BO-V2AV PCB
- 2) 1pc X Vertical SATA Female Socket
- 3) 2pc X 4pin 0.1"(2.54mm) spacing terminal block
- 4) 1pc X 8pin 0.1"(2.54mm) header

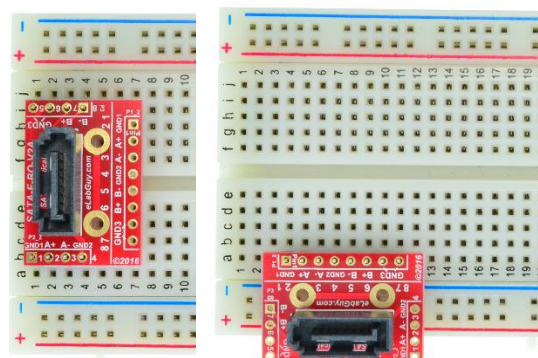


Figure 2: Example of connecting the SATA-F-BO-V2AV on a breadboard

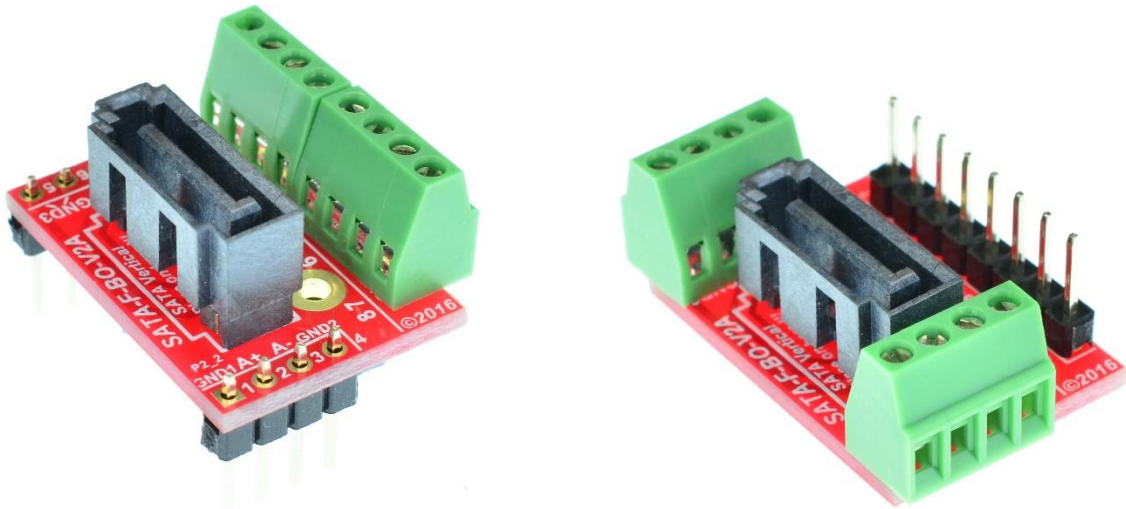


Figure 3: SATA-F-BO-V2AV Various connections

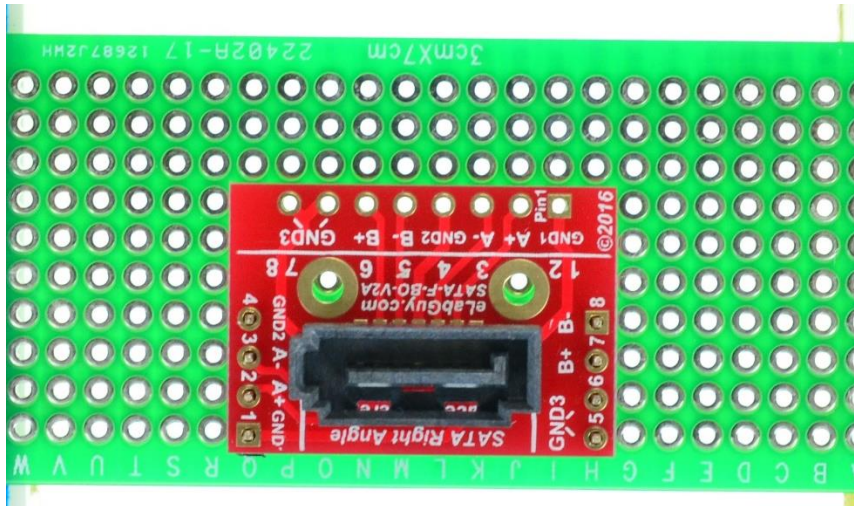
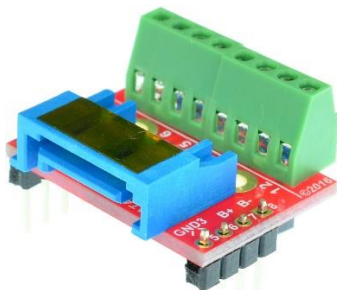


Figure 4: Solid Mounting on prototype PCB

### Related products from eLabGuy:



**SATA-F-BO-V2A**



**ESATA-F-BO-V1A**