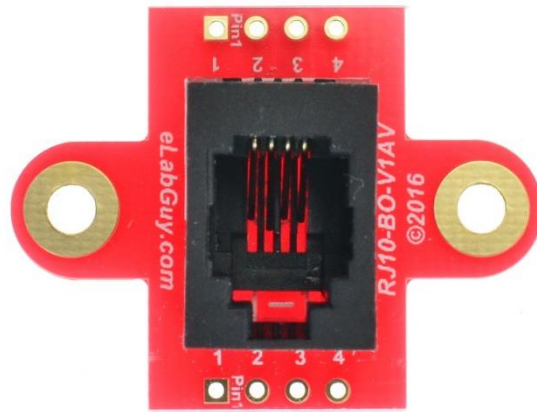


# RJ10-BO-V1AV

## 1. Description:

RJ10-BO-V1AV is a simple RJ9/RJ10/RJ22 4P4C vertical socket breakout board. It brings all 4 pins of a RJ10 socket to screw terminal blocks or headers for easy testing, prototyping and breadboard connection. For breadboard connections, user can use the two 4pin headers on both sides of the breakout board to connect to the breadboard for a steady connection.



## 2. Features:

- All 4 pins of a RJ9/RJ10/RJ22 4P4C socket brought out to headers or screw terminal blocks
- Various connecting method chosen by users.
- 2 mounting holes with 3mm diameter hole size
- 1.0"(25.4mm)X1.33"(33.70mm) board dimensions

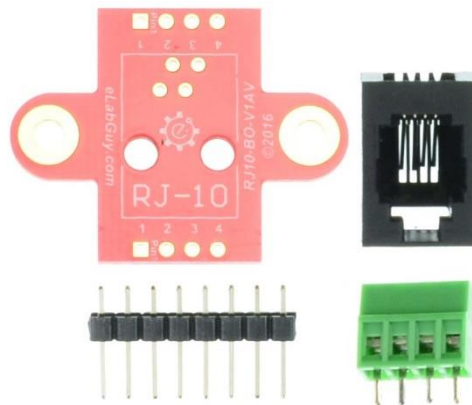


Figure 1: Parts inside the kit  
(Note: the module is not assembled, user can decide which connector to use on the module.)

## 3. Parts:

- 1) 1pc X RJ10-BO-V1AV PCB
- 2) 1pc X RJ10 vertical socket
- 3) 1pc X 4pin 0.1"(2.54mm) spacing terminal block
- 4) 1pc X 8pin 0.1"(2.54mm) header

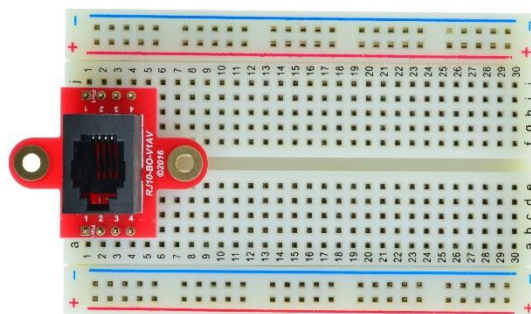
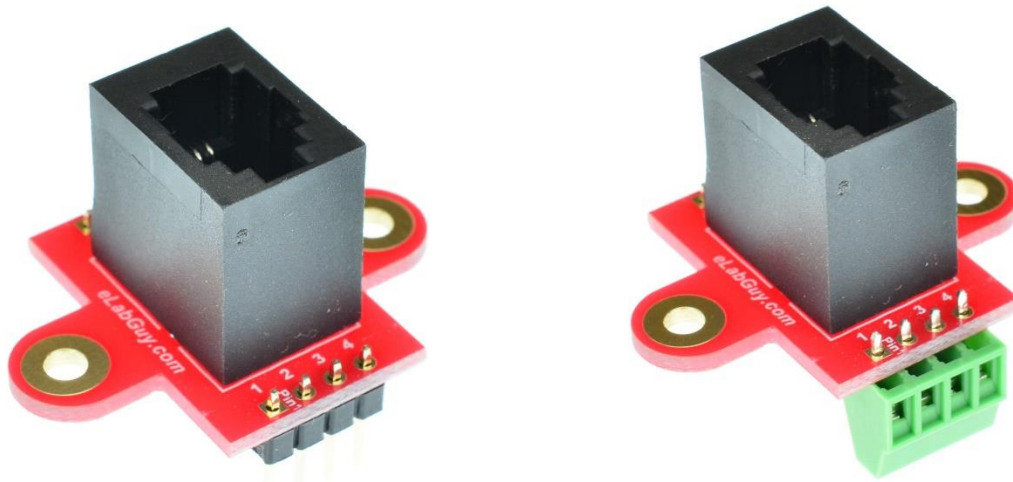


Figure 2: Example of connecting the RJ10-BO-V1AV on a breadboard



*Figure 3: RJ10-BO-V1AV various connections*

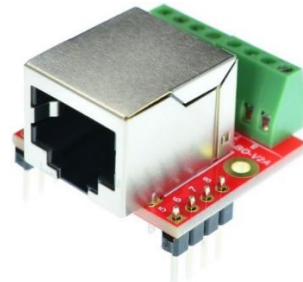
**Related products from eLabGuy:**



**RJ10-BO-V1A**



**RJ11-BO-V2A**



**RJ45-BO-V2A**