

HDMI-CF-CM-V1A

1. Description:

HDMI-CF-CM-V1A is a simple Mini HDMI Type C Female to Mini HDMI Type C Male pass-through adapter breakout board. It brings all 20 pins of a Mini HDMI Type C Female and a Mini HDMI Type C Male connector to screw terminal blocks and headers for easy testing, prototyping and breadboard connection. All 20 pins of the Female connector directly connect to the Male connector. User can also use the two 10 pins headers on both sides of the breakout board to connect to breadboard or prototype PCB.

2. Features:

- All 20 pins of a Mini HDMI Type C Female and a Mini HDMI Type C Male connector brought out to headers and screw terminal blocks
- All 20pins of a Mini HDMI Type C Female connector directly connect to a Mini HDMI Type C Male connector.
- Various connecting method chosen by users.
- 0.90"(22.86mm)X1.21"(30.8mm) board dimensions

3. Parts:

- 1) 1pc X HDMI-CF-CM-V1A PCB
- 1) 1pc X Mini HDMI Type C Female Connector
- 1) 1pc X Mini HDMI Type C Male Connector
- 2) 2pc X 10pin 0.1"(2.54mm) spacing terminal block
- 1) 1pc X 20pin 0.1"(2.54mm) header

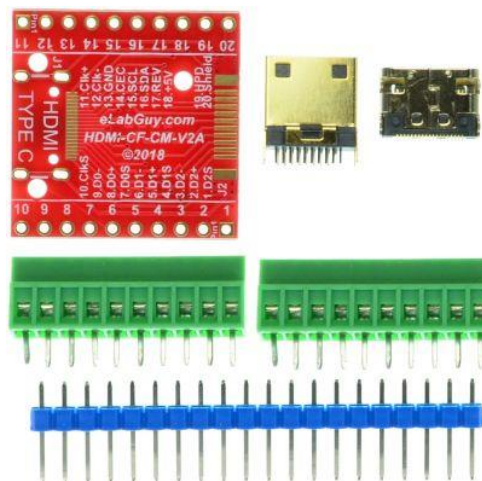
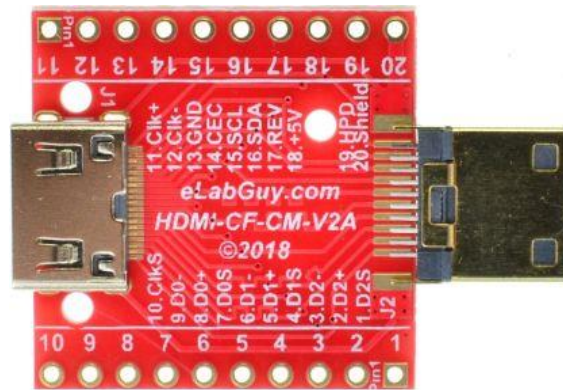


Figure 1: Parts inside the kit
(Note: the module is not assembled, user can decide which connector to use on the module.)

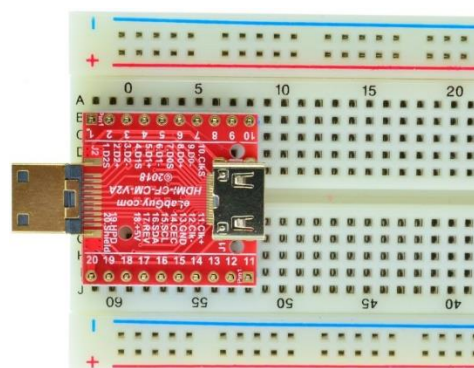


Figure 2: Example of connecting the HDMI-CF-CM-V1A on a proto PCB (Note: This picture only shows the pins spacing, actual use may not be used on a breadboard)



Figure 3: HDMI-CF-CM-V1A with headers



Figure 4: HDMI-CF-CM-V1A with terminal blocks

Related products from eLabGuy:



HDMI-CF-CF-V1A



HDMI-AF-CF-V1A



HDMI-AF-CM-V1A