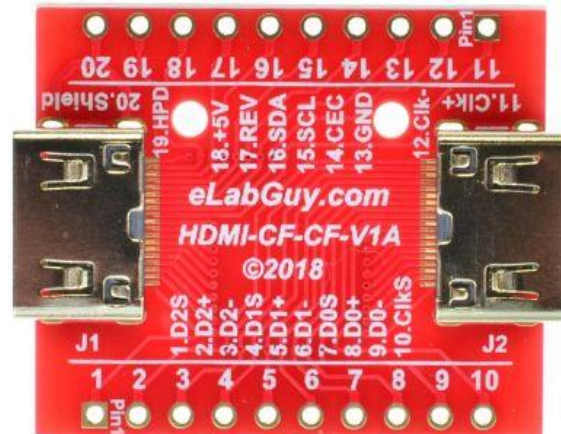


# HDMI-CF-CF-V1A

## 1. Description:

HDMI-CF-CF-V1A is a simple Mini HDMI Type C Female to Mini HDMI Type C Female pass-through adapter breakout board. It brings all 20 pins of two Mini HDMI Type C Female connectors to screw terminal blocks and headers for easy testing, prototyping and breadboard connection. All 20 pins of a Female connector directly connect to another Female connector. User can also use the two 10 pins headers on both sides of the breakout board to connect to breadboard or prototype PCB.



## 2. Features:

- All 20 pins of two Mini HDMI Type C Female connectors brought out to headers and screw terminal blocks
- All 20 pins of a Mini HDMI Type C Female connector directly connect to another Mini HDMI Type C Female connector.
- Various connecting method chosen by users.
- 1.00"(25.4mm)X1.18"(30mm) board dimensions

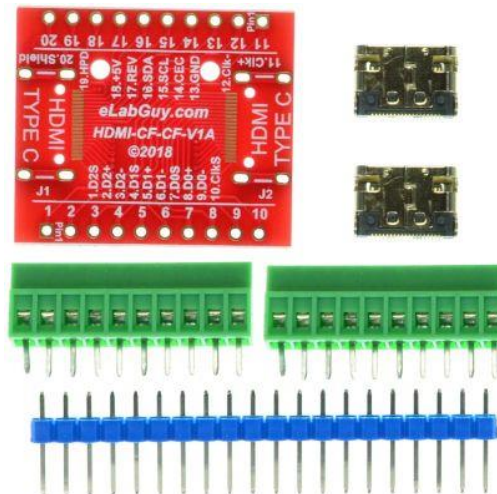


Figure 1: Parts inside the kit  
(Note: the module is not assembled, user can decide which connector to use on the module.)

## 3. Parts:

- 1) 1pc X HDMI-CF-CF-V1A PCB
- 2) 2pc X Mini HDMI Type C Female Connector
- 3) 2pc X 10pin 0.1"(2.54mm) spacing terminal block
- 4) 1pc X 20pin 0.1"(2.54mm) header

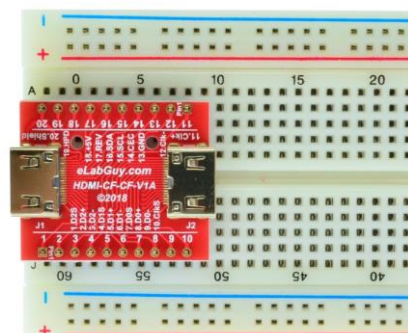


Figure 2: Example of connecting the HDMI-CF-CF-V1A on a proto PCB (Note: This picture only shows the pins spacing, actual use may not be used on a breadboard)

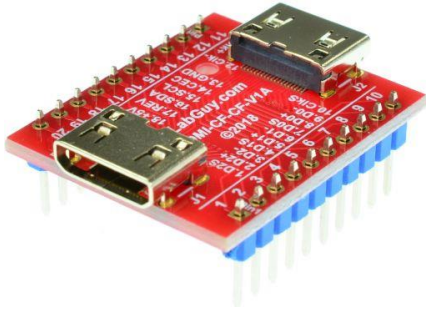


Figure 3: HDMI-CF-CF-V1A with headers

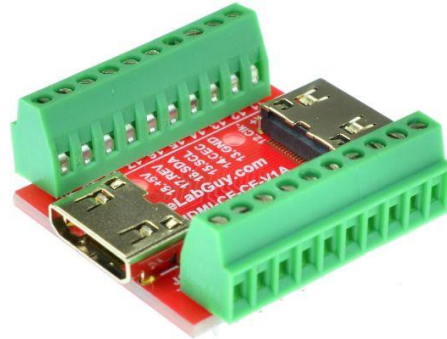


Figure 4: HDMI-CF-CF-V1A with terminal blocks

### Related products from eLabGuy:



**HDMI-CF-CF-V1A**



**HDMI-AF-CF-V1A**



**HDMI-AF-CM-V1A**



**HDMI-CF-CM-V1A**