

DVI-IM-DSM-V1A

1. Description:

DVI-IM-DSM-V1A is a simple DVI-I dual link male to DVI-D single link male pass-through adapter breakout board. It brings all 18 pins of DVI-I dual link male connector and a DVI-D single link male connector to screw terminal blocks and headers for easy testing, prototyping and breadboard connection. All 18 pins of the DVI-I Male connector are directly connected to a DVI-D Male connector. For breadboard connections, user can use the two 15pin headers on both sides of the breakout board to connect to the front end of the breadboard for a steady connection.

2. Features:

- All 18 pins of a DVI-I dual link male connector are directly connected to a DVI-D single link male connector.
- All 18 pins of DVI-I dual link male and single link male connectors brought out to headers and screw terminal blocks
- Various connecting method chosen by users.
- 4 mounting holes with 3mm diameter hole size
- 1.48"(37.5mm)X2.19"(55.6mm) board dimensions

3. Parts:

- 1) 1pc X DVI-IM-IM-V1A PCB
- 2) 1pc X DVI-I dual link male connector
- 3) 1pc X DVI-D single link male connector
- 4) 2pc X 5pin 0.1"(2.54mm) spacing terminal block
- 5) 2pc X 10pin 0.1"(2.54mm) spacing terminal block
- 6) 1pc X 30pin 0.1"(2.54mm) header

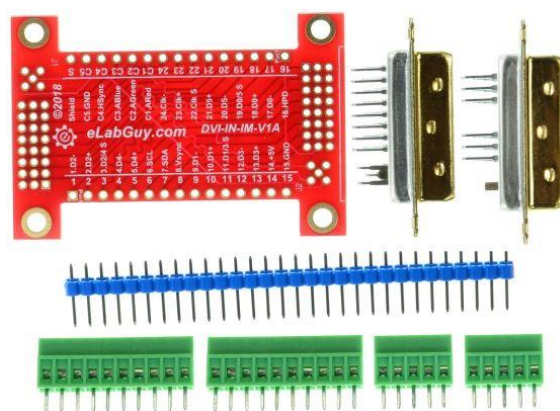


Figure 1: Parts inside the kit
(Note: the module is not assembled, user can decide which connector to use on the module.)

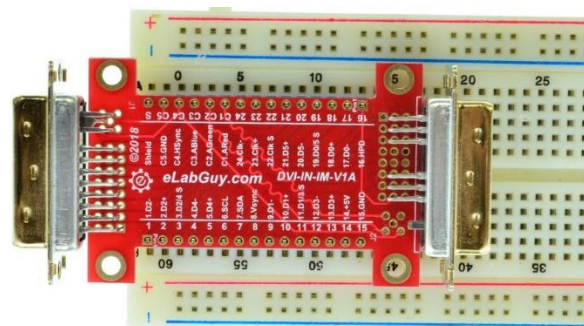


Figure 2: Example of connecting the DVI-IM-DSM-V1A on a breadboard (Note: This picture only shows the pins spacing, actual use may not be used on a breadboard)



Figure 3: DVI-IM-DSM-V1A with headers



Figure 4: DVI-IM-DSM-V1A with terminal block



Figure 5: DVI-I dual link male



Figure 6: DVI-D single link male

Related products from eLabGuy:



DVI-DF-IM-V1A



DVI-DF-DF-V1A



DVI-DF-DSM-V1A



DVI-IM-IM-V1A



DVI-DM-DM-V1A



DVI-DSM-DSM-V1A