

DVI-DSM-DSM-V1A

1. Description:

DVI-DSM-DSM-V1A is a simple DVI-D single link male to male pass-through adapter breakout board. It brings all 18 pins of two DVI-D single link male connectors to screw terminal blocks and headers for easy testing, prototyping and breadboard connection. All 18 pins of a DVI male connector is directly connected to another DVI male connector. For breadboard connections, user can use the two 15pin headers on both sides of the breakout board to connect to the front end of the breadboard for a steady connection.

2. Features:

- All 18 pins of a DVI-D single link male connector is directly connected to another DVI-D single link male connector.
- All 18 pins of two DVI-D single link male connector brought out to headers and screw terminal blocks
- Various connecting method chosen by users.
- 4 mounting holes with 2mm diameter hole size
- 1.48"(37.5mm)X2.19"(55.6mm) board dimensions

3. Parts:

- 1) 1pc X DVI-IM-IM-V1A PCB
- 2) 2pc X DVI-D single link male connector
- 3) 2pc X 5pin 0.1"(2.54mm) spacing terminal block
- 4) 2pc X 10pin 0.1"(2.54mm) spacing terminal block
- 5) 1pc X 18pin 0.1"(2.54mm) header

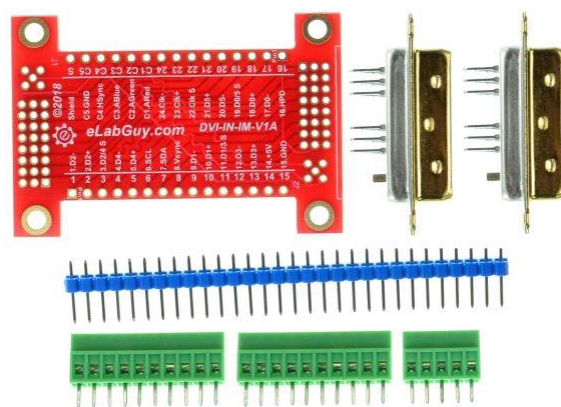


Figure 1: Parts inside the kit
(Note: the module is not assembled, user can decide which connector to use on the module.)

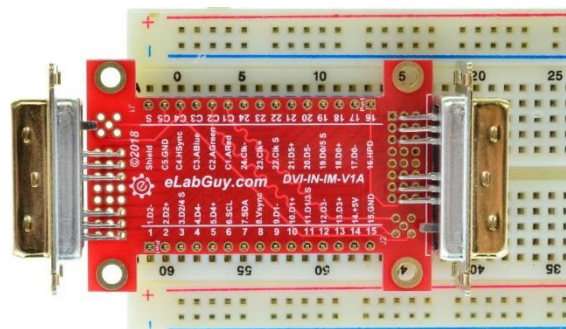


Figure 2: Example of connecting the DVI-DSM-DSM-V1A on a breadboard (Note: This picture only shows the pins spacing, actual use may not be used on a breadboard)

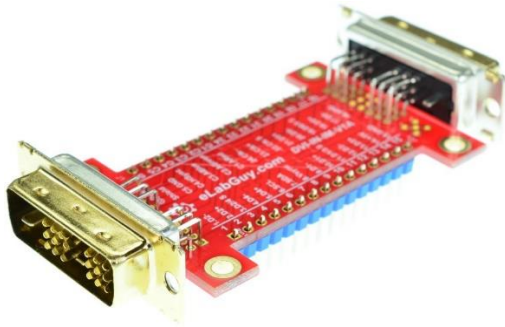


Figure 3: DVI-DSM-DSM-V1A with headers

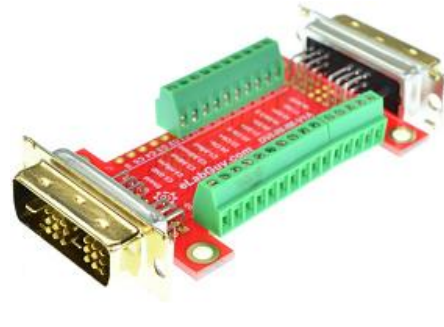


Figure 4: DVI-DSM-DSM-V1A with terminal block



Figure 6: DVI-D Single link male

Related products from eLabGuy:



DVI-DF-IM-V1A



DVI-DF-DF-V1A



DVI-DF-DSM-V1A



DVI-IM-IM-V1A



DVI-DM-DM-V1A



DVI-DSM-DSM-V1A