

DP-F-BO-V1AV

1. Description:

DP-F-BO-V1AV is a simple Displayport Female connector breakout board. It brings all 20 pins of a Displayport Female connector to screw terminal blocks or headers for easy testing, prototyping and breadboard connection. For breadboard connections, user can use the two 10pin headers on both sides of the breakout board to connect on a breadboard for a steady connection.

2. Features:

- All 20 pins of a Displayport Female connector brought out to headers or screw terminal blocks
- Various connecting method chosen by users.
- 2 mounting holes with 3mm diameter hole size
- 0.70"(17.78mm)X1.61"(40.80mm) board dimensions

3. Parts:

- 1) 1pc X DP-F-BO-V1AV PCB
- 2) 1pc X Displayport Female connector
- 3) 2pc X 10pin 0.1"(2.54mm) spacing terminal block
- 4) 1pc X 20pin 0.1"(2.54mm) header

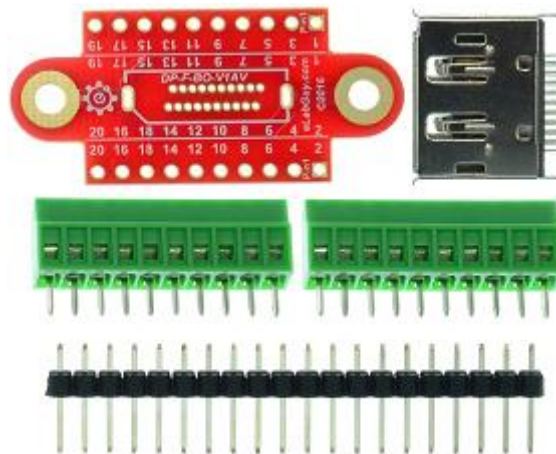
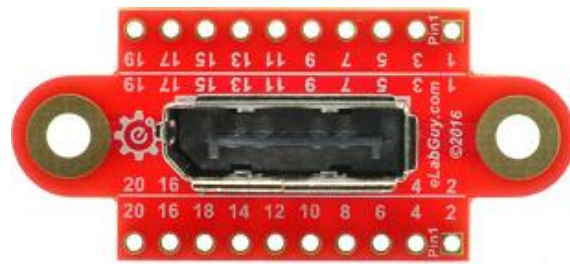


Figure 1: Parts inside the kit
(Note: the module is not assembled, user can decide which connector to use on the module.)

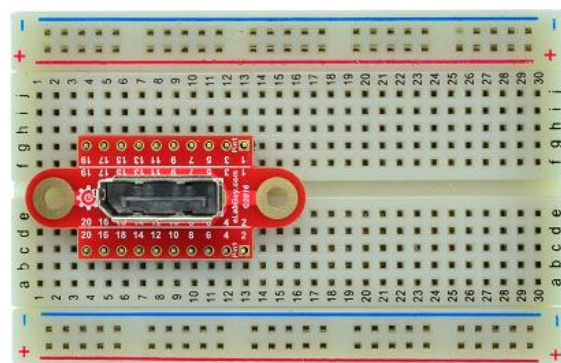


Figure 2: Example of connecting the DP-F-BO-V1AV on a breadboard

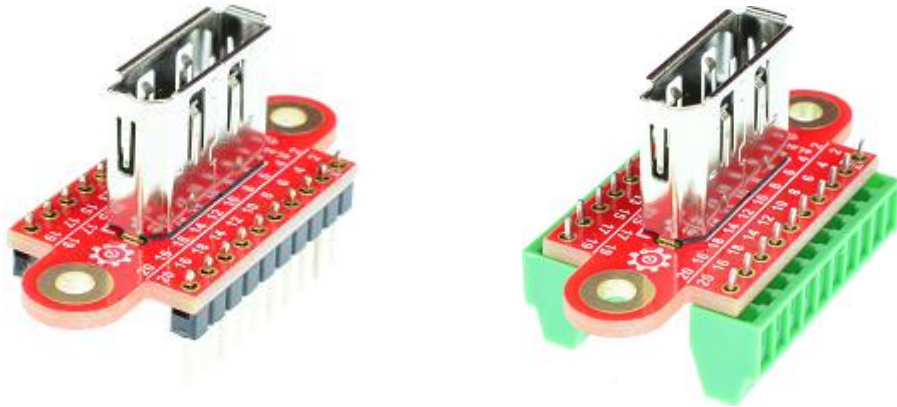
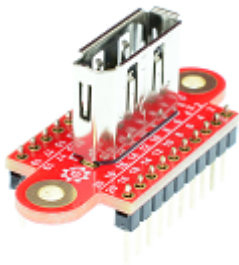


Figure 3: DP-F-BO-V1AV various connections

Related product from eLabGuy:



DP-F-BO-V1AV



DP-F-BO-V2A



DP-F-BO-V1AS