

DIN8-F-BO-V1A

1. Description:

DIN8-F-BO-V1A is a simple Din 8 Female socket breakout board. It brings all 8 pins of a Din 8 Female socket to screw terminal blocks or headers for easy testing, prototyping and breadboard connection. For breadboard connections, user can use the 10pin header on the bottom for a sideways connection. User can also use the two 5pin headers on both sides of the breakout board to connect to the front end of the breadboard for a steady connection.

2. Features:

- All 9 pins (including shield) of a Din 8 Female socket brought out to headers or screw terminal blocks
- Various connecting method chosen by users.
- 2 mounting holes with 2mm diameter hole size
- 1.0"(25.4mm)X1.0"(25.4mm) board dimensions

3. Parts:

- 1) 1pc X **DIN-F-BO-V1A PCB**
- 2) 1pc X **Din 8 Female socket**
- 3) 2pc X **5pin 0.1"(2.54mm) spacing terminal block**
- 4) 1pc X **10pin 0.1"(2.54mm) header**

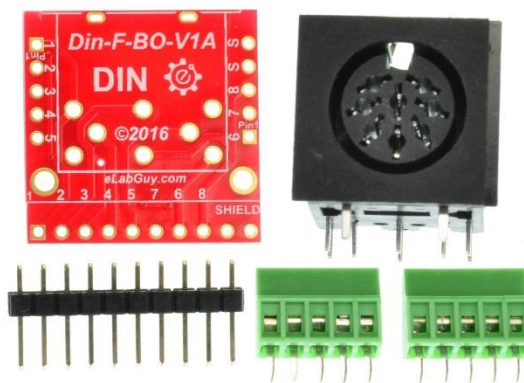
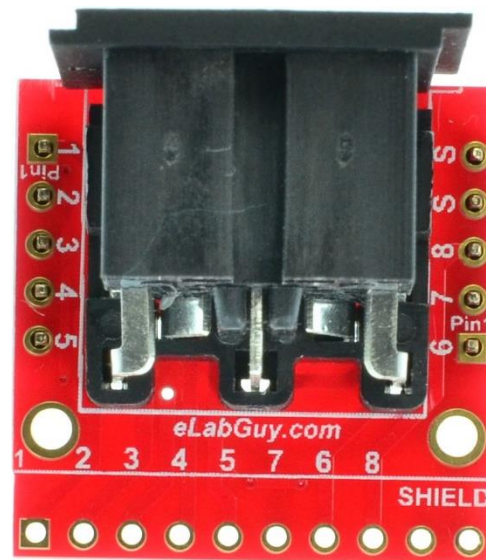


Figure 1: Parts inside the kit
(Note: the module is not assembled, user can decide which connector to use on the module.)

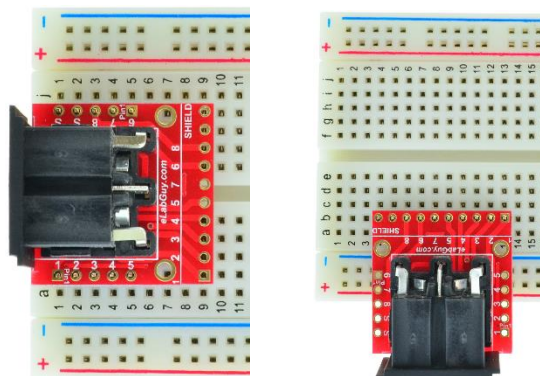


Figure 2: Example of connecting the DIN8-F-BO-V1A on breadboard

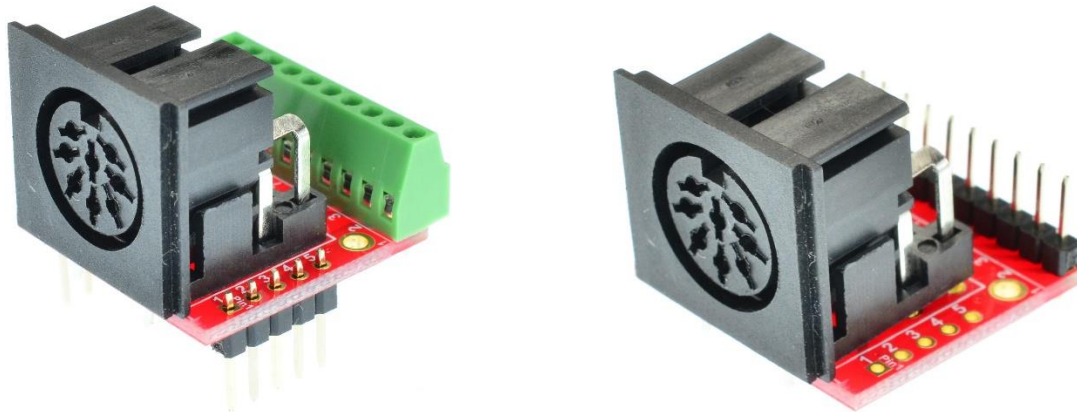
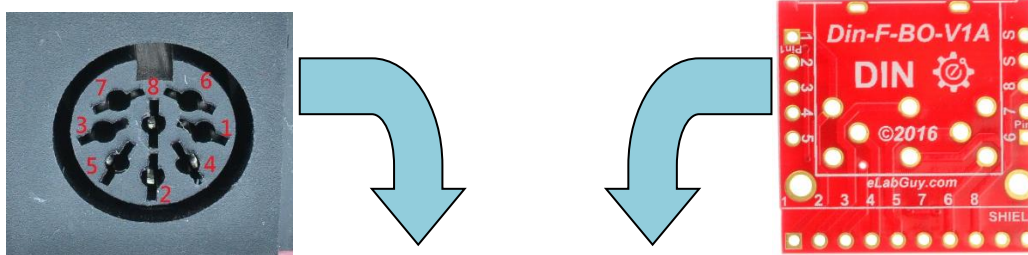


Figure 3: DIN8-F-BO-V1A various connections



<i>Din 8 Female Connector</i>	<i>Din-F-BO-V1A PCB</i>
1	1
2	2
3	3
4	4
5	5
6	6
7	7
8	8

Figure 4: Din 8 Female connector to Din-F-BO-V1A PCB pinout matching table

Related products from eLabGuy:



DIN4-F-BO-V1A

DIN5-F-BO-V1A

DIN6-F-BO-V1A

DIN7-F-BO-V1A

DIN8-F-BO-V1A