

D9-F-F-V1A

1. Description:

D9-F-F-V1A is a simple DB9 Female to DB9 Female pass-through adapter breakout board. It brings all 9 pins of two DB9 Female connectors to screw terminal blocks and headers for easy testing, prototyping and breadboard connection. All 9 pins of a Female connector directly connect to another Female connector. User can also use the two 5 pins headers on both sides of the breakout board to connect to breadboard or prototype PCB.

2. Features:

- All 10 pins (including shield) of two DB9 Female connectors brought out to headers and screw terminal blocks
- All 9 pins of a DB9 Female connector directly connect to another DB9 Female connector.
- Various connecting method chosen by users.
- 4 X 2.0mm mounting holes
- 1.21"(30.8mm)X2.04"(51.8mm) board dimensions

3. Parts:

- 1) 1pc X D9-FM-FM-V1A PCB
- 2) 2pc X DB9 Female Connector
- 3) 2pc X 5pin 0.1"(2.54mm) spacing terminal block
- 4) 1pc X 10pin 0.1"(2.54mm) header
- 5) 4pcs X4-40UNC diameter 8.3mm long screws

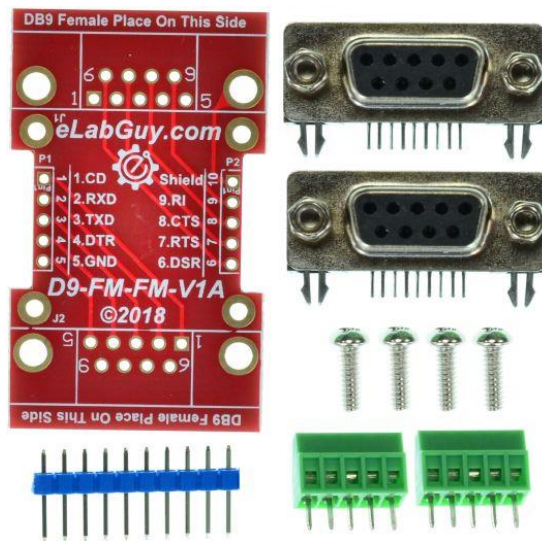
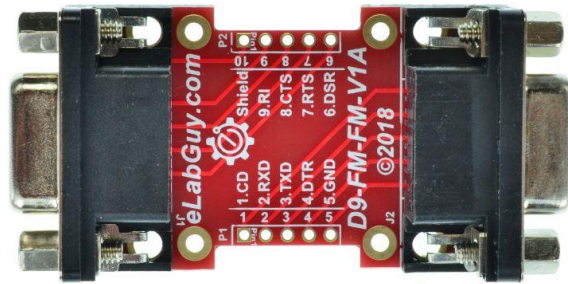


Figure 1: Parts inside the kit
(Note: the module is not assembled, user can decide which connector to use on the module.)

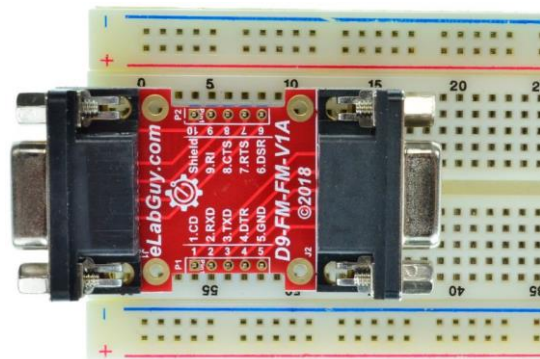


Figure 2: Example of connecting the D9-F-F-V1A on a proto PCB (Note: This picture only shows the pins spacing, actual use may not be used on a breadboard)

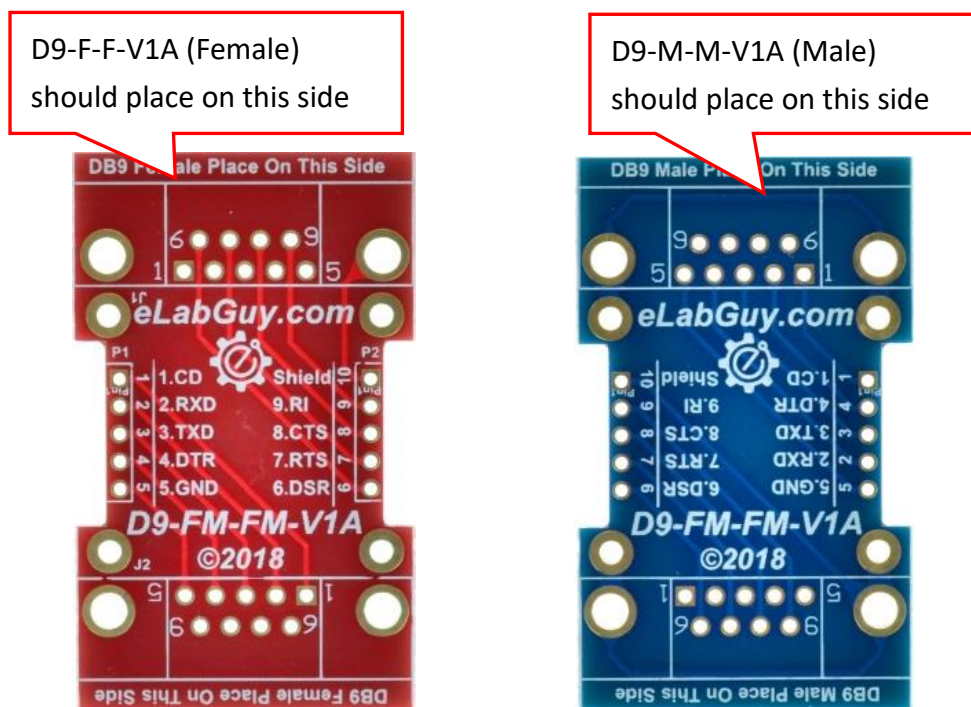


Figure 3: D9-F-F-V1A with headers



Figure 4: D9-F-F-V1A with terminal blocks

Caution!! When assembling the D9-F-F-V1A, please make sure you place the connector on the right side.



Related products from eLabGuy:



D9-F-M-V1A



D9-F-F-V1A



D9-M-M-V1A



D9-FC-MC-V1A



D9-FC-FC-V1A



D9-MC-MC-V1A