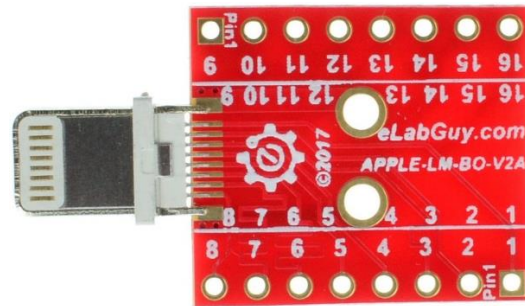


APPLE-LM-BO-V2A

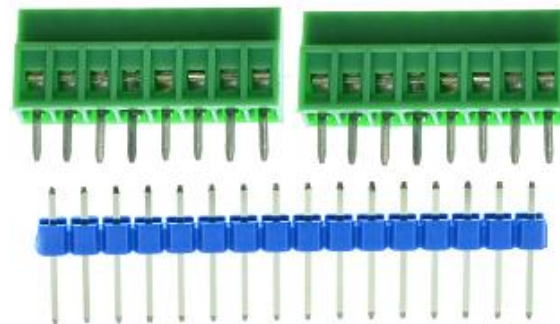
1. Description:

APPLE-LM-BO-V2A is a simple Apple Lighting Male socket breakout board. It brings all 16 pins of an Apple Lighting Male connector to screw terminal blocks and headers for easy testing, prototyping and breadboard connection. For breadboard connections, user can use the two 8pin headers on both sides of the breakout board to connect to the front end of the breadboard for a steady connection.



2. Features:

- All 16 pins of an Apple Lighting Male Plug brought out to headers and screw terminal blocks
- Various connecting method chosen by users.
- 0.7"(17.78mm)X0.8"(20.32mm) board dimensions



3. Parts:

- 1) 1pc X APPLE-LM-BO-V2A PCB
- 1) 1pc X Apple Lighting Male Plug
- 2) 2pc X 8pin 0.1"(2.54mm) spacing terminal block
- 4) 1pc X 16pin 0.1"(2.54mm) header

Figure 1: Parts inside the kit

(Note: the module is not assembled, user can decide which connector to use on the module.)

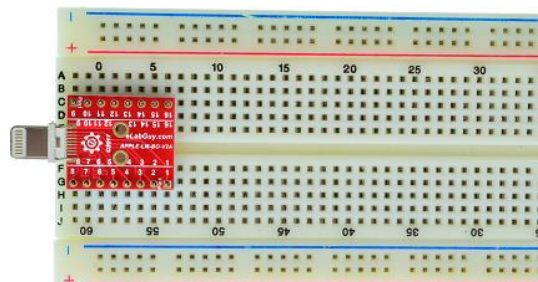


Figure 2: Example of connecting the APPLE-LM-BO-V2A on a breadboard

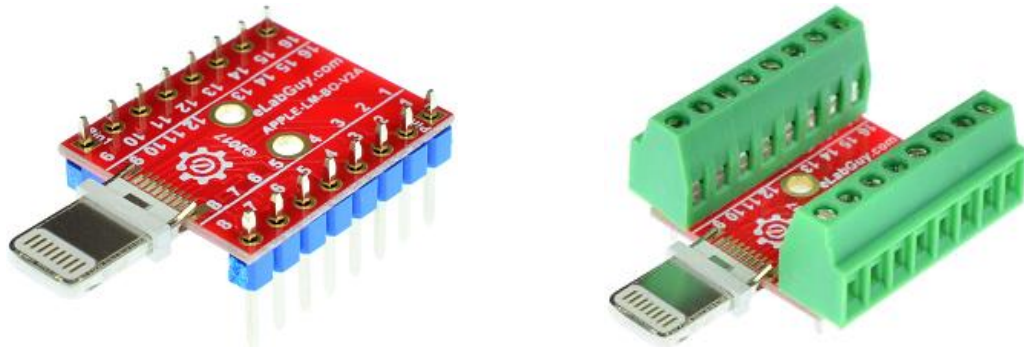


Figure 3: APPLE-LM-BO-V2A Various connections

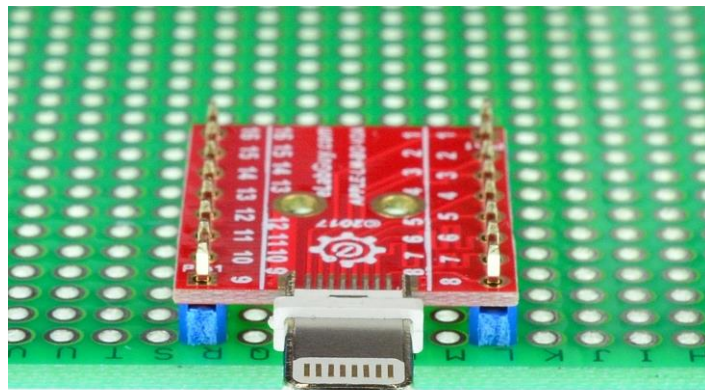


Figure 5: Solid Mounting on prototype PCB

Related products from eLabGuy:



APPLE-LF-BO-V2A



APPLE-LM-BO-V2AV